



## Welcome to Historic Sandusky's eNewsletter

Enjoy updates on Historic Sandusky!

### Sandusky Blog

Have you seen our latest blog posts? Sandusky has been posting entries to a blog for staff, graduate assistants, and interns to share their experiences while at Sandusky. Recently, two new entries have been posted. The first from Lynchburg College senior marketing major Charlotte Galamb about her internship at Sandusky. The second from Sandusky historical interpreter and Lynchburg College history graduate Tim Elliott on the work he has been doing to create biographies of the Hutter family.

To read Charlotte's blog post, [Making Our Way Past Gift Shop Puberty: My Historic Sandusky Internship](#), [click here](#).

To read Tim's blog post, [Learning From The Past](#), [click here](#).

### Historic Sandusky Projects



Historic Sandusky recently received a grant from the Greater Lynchburg Community Trust to create an online digital archive of its manuscripts. This online exhibit will include photos, letters, diaries, and documents related to the history of Sandusky, Lynchburg, and the United States. The launch date is September

2017. Please stay tuned for further updates throughout the spring and summer.

### What's New at Sandusky

A few more details have been added to the Sandusky Entry Hall! These include a tall case clock donated by Buzzards Roost Antiques,

### In This Issue

[Sandusky Blog](#)

[Lynchburg College and Sandusky](#)

[What's New at Sandusky?](#)

[Archaeology Update](#)

## Archaeology Update

The archaeology lab at Historic Sandusky has been quite busy lately with Greenfield Preston Plantation project. Work on this extensive project began with a five week dig in May and June of 2016 led by archaeologists from Hurt and Proffitt who were assisted by numerous volunteers.

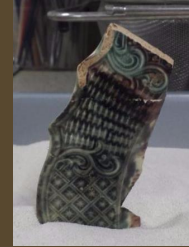


Beginning in August, student lab technicians began cleaning, bagging, labeling, mending, and identifying the nearly 20,000 artifacts from the dig. Each of these phases is taking about 45 days to complete with the supervision of a professional archaeologist.



Currently, our students are in the process of identifying artifacts, cataloging them will begin in early March.


a Federal style gilt-framed mirror, and a set of curtains and curtain holdbacks for the stairway window. Here, historical interpreter Kelly sews hanging rings onto the new curtains.




To see what is going on in the lab, follow them [@handparchaeologyatsandusky](https://www.instagram.com/handparchaeologyatsandusky) on instagram

[Join Our Mailing List!](#)

Diana Harvey, BS '14, MA '16 Lynchburg College  
Historical Interpreter: Historic Sandusky Foundation

 Like us on Facebook

[Follow us on \*\*twitter\*\*](#)

 View on Instagram