

Odd Fellows Hall

The [Odd Fellows](#) Hall was originally build as a Universalist Church in 1842. It was a two-story brick building was built in the formal, Greek Revival style measuring forty feet along the front and sixty feet deep. It ceased functioning as a church in less than a decade. Over the decades it served as a theater, meeting hall, and at the time of the Civil War it was an Odd Fellows Hall.

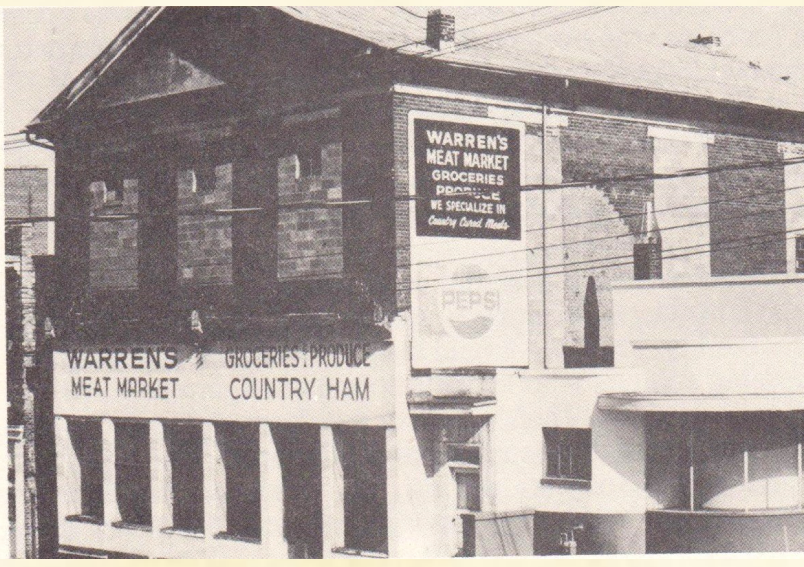
During the war it was used as a hospital and became the primary location where emergency operations such as amputations took place. Over the course of its tenure as a hospital, twenty-three soldiers died at Odd Fellows. The building was demolished in 1986.



Blackford's 1860 map shows the Odd Fellows Hall. It sat on twelfth Street between Church & Main. It also appears on Grays' 1877 map.



The Odd Fellows Hall was located behind the current Lynchburg Visitor Center. The Community Market is to the left.



Odd Fellows Hall (1842-1986). The brick building to the lower right is the corner of the Lynchburg Visitors Center



Odd Fellows Hall circa 1985. Photo from the newsletter of the Lynchburg Historical Foundation, Spring 1985 issue.

